

NEED ADDITIONAL INFO? CONTACT THE FRONT OFFICE: 816-418-3000

2022-23 LCPA BELL SCHEDULE	
Tuesday/Thursday	Wednesday/Friday
7:20 - 8:40 Hour 1	7:20 - 8:40 Hour 2
8:45 - 10:05 Hour 3	8:45 - 10:05 Hour 4
10:10 - 10:50 Advisory	10:10 - 10:50 Advisory
10:55 - 12:55 Hour 5	10:55 - 12:55 Hour 6
10:55 - 11:25 (Lunch 1)	10:55 - 11:25 (Lunch 1)
11:40 - 12:10 (Lunch 2)	11:40 - 12:10 (Lunch 2)
12:25 - 12:55 (Lunch 3)	12:25 - 12:55 (Lunch 3)
1:00 - 2:20 Hour 7	1:00 - 2:20 Hour 8

**\*Mondays Alternate A / B**

**Important Contacts**

Mrs. Shanelle Smith - Principal - Seniors  
-- ssmith5@kcpublicschools.org

Mr. Seth Oldham - Assistant Principal - Juniors  
--> soldham@kcpublicschools.org

Mr. Geoffrey Talbot - Assistant Principal - Sophomores  
--> gtalbot@kcpublicschools.org

Mr. Bryan Shaw - Assistant Principal - Freshmen  
--> bshaw@kcpublicschools.org

Ms. Elyria Vandegrift - Counselor Last Names A-G  
--> evandegrift@kcpublicschools.org

Ms. Rachel Pinci - Counselor, Last Names H - N  
--> rpinci@kcpublicschools.org

Ms. Nyree Smith - Counselor Last Names O - Z  
--> nysmith@kcpublicschools.org

**Retention Requirements**

In order to remain at LCPA, students must meet the following criteria:

- Maintain a GPA at or above 2.5
- 90% attendance
- No more than two Class III discipline issues

Students who fail to meet these criteria will be placed on Academic Probation, and their enrollment will be reviewed annually.

**LCPA VALUES**

Empathy -- Equity -- Fun -- Integrity -- Open-mindedness

**Need a schedule change?**

To be processed for a schedule change, students must fill out the Schedule Change Request Google Form, which can be found by scanning the QR code below.

The counseling team will review all requests and will honor them when possible. Priority will be given to Seniors, then Juniors, then Sophomores and finally Freshmen.

Scan this code to access the form. All requests must be filed during week one.



Kindly submit the form *only one time!*

**LCPA VISION**

Where innovation and self-discovery empower students to positively impact the world.

**LCPA MISSION**

At Lincoln College Preparatory Academy, we foster a respectful, inclusive, equitable environment for a diverse school community where relevant, rigorous, and innovative instruction shapes students into impactful local and global leaders.

**Morning Arrival**

We are so excited to welcome new and returning students to LCPA on Monday, August 22nd!

6:55 am - School Doors Open  
6:55 - 7:10 - Students report to either the auditorium or the cafeteria.  
7:10 am - Students transition to 1st period.  
7:20 am - Tardy bell rings - class begins.

Parent Drop-Off is Westbound on 22nd Street.

As students enter the building, they will go through a security check. Make sure all pockets on backpacks are unzipped to facilitate a quick entry.

**School Dismissal**

2:20 pm - Dismissal bell rings

Parent Pick-Up is Northbound or Southbound on Woodland Ave.

Students who ride the bus will exit the building on the North end, near the art wing. They have five minutes to board their bus.

Students staying for clubs, sports and activities must report to the auditorium by 2:25 pm. Their sponsor or coach will retrieve them.

**Transportation**

Families can find their bus routes in the student or parent portal of Infinite Campus.

Log in, and choose the "Transportation" tab.

If you're unable to see bus routes in Infinite Campus, you can check by entering your student's information into [this website](https://versatransweb05.tylertech.com/KansasCity/mlinkr/Students/BasicTransBoundarySearch.aspx).

<https://versatransweb05.tylertech.com/KansasCity/mlinkr/Students/BasicTransBoundarySearch.aspx>

If your student was enrolled at Lincoln within the last two weeks, they may not have transportation arranged yet. While your student's route is being created, please plan on alternate modes of transportation when possible.

Bus didn't show? Call or email Transportation 816-418-8825 or schoolbus@kcpublicschools.org

SEE THE BACKSIDE FOR MORE IMPORTANT INFO!

NEED ADDITIONAL INFO? CONTACT THE FRONT OFFICE: 816-418-3000

**Locker Checkout**

Students who wish to check out a locker may do so during the second week of school. In order to claim a locker, students must provide their own combination lock.

**Locker Rooms**

Students in PE or weight training must provide their own combination lock in order to secure their belongings in the locker room.

**Technology**

Each learner will receive a district laptop during their first week of school. Students will be held financially responsible for any damaged, lost or stolen laptops.

Here are some examples of common damage fees:

Keyboard - \$50

Webcam - \$50

Touch Screen - \$109

Replacement - \$400

Device insurance is available in Infinite Campus. Call 816-418-7888 for assistance.

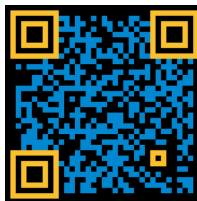
**Infinite Campus**

Families can check their student's grades at any times through the Infinite Campus Parent Portal! Create your account by scanning the blue and gold QR code to the left!

Don't have your access code? Call the Help Desk at 816-418-7888 or the office of Admissions at 816-418-7505 between 8:00 am - 4:00 pm for help.

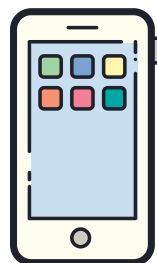
**School Supplies**

For a list of grade-appropriate school supplies, scan the blue QR code to the right. Don't forget a combination lock for lockers and locker rooms.

**Social Media and Cell Phones**

Learners are encouraged to always exercise the utmost caution when participating in any form of social media or online communications, both within the KCPS community and beyond. Learners who participate in online interactions must remember that their posts are subject to the same behavioral standards set forth in the Code of Student Conduct.

Outside of circumstances in which a learner notifies administration for necessary cell phone use, learners are expected to limit use of electronic devices to before and after school.

**School Year Calendar**

Tiger families are busy, so scan the purple QR code to the left for easy access to the KCPS School Year 22-23 Calendar. This will show you grade deadlines, district holidays and breaks, and more!

Important upcoming dates to keep in mind:

Monday, September 5th - Labor Day Holiday - No school  
October 27th - Teacher Work Day - No school  
October 28th - Parent Teacher Conferences - No School

**Clubs and Orgs**

All school clubs and organizations meet after school and conclude at 5:15 pm. Late activity buses are available for those who need them.

We currently offer the following clubs and orgs:

Art Club  
Black Student Union  
Debate and Forensics  
Dungeons and Dragons  
Epsilon Beta  
Film Club  
Future Medical Professionals  
Gender & Sexualities Alliance  
HBCU Prospects  
Healthy Minds  
Jazz Band  
Jazz Combo  
Key Club  
Leadership Lab  
Louder Than a Bomb  
Math Club  
National Honors Society  
Pep Club  
Project Lit  
Robotics  
Seal of Biliteracy  
Senior-Freshmen Mentors  
Spanish Honor Society  
Student Council  
Theater Club  
Yearbook

**LCPA Sports**

All school sports meet after school and conclude at 5:15 pm. Late activity busses are available for those who need them.

We currently offer the following athletic programs:

Baseball  
Basketball - Men's  
Basketball - Women's  
Cross Country  
Football  
Soccer - Men's  
Soccer - Women's  
Tennis - Men's  
Tennis - Women's  
Track and Field  
Volleyball  
Wrestling

**LET'S HAVE A FANTASTIC YEAR, TIGERS!**